

21.01.2013 Check out run: test of the chip and liposome – Manual run

POPC immobilization levels: 8361,8323, 8458, 8333 from FC1 to FC 4

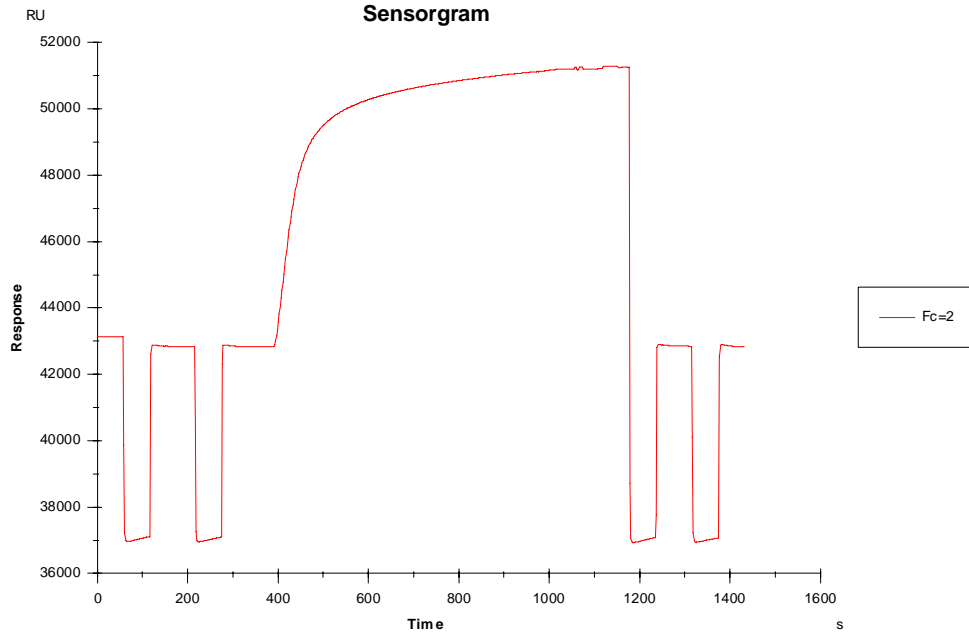


Figure 1

21.01.2013 Test of inhibitors

PR3 and inhibitors were preincubated and then injected over the immobilized POPC.

Here are big artefacts coming from the DMSO. PR3 expected binding is around 800 RUs and for the inhibitors is zero RU. Controls are not adequate.

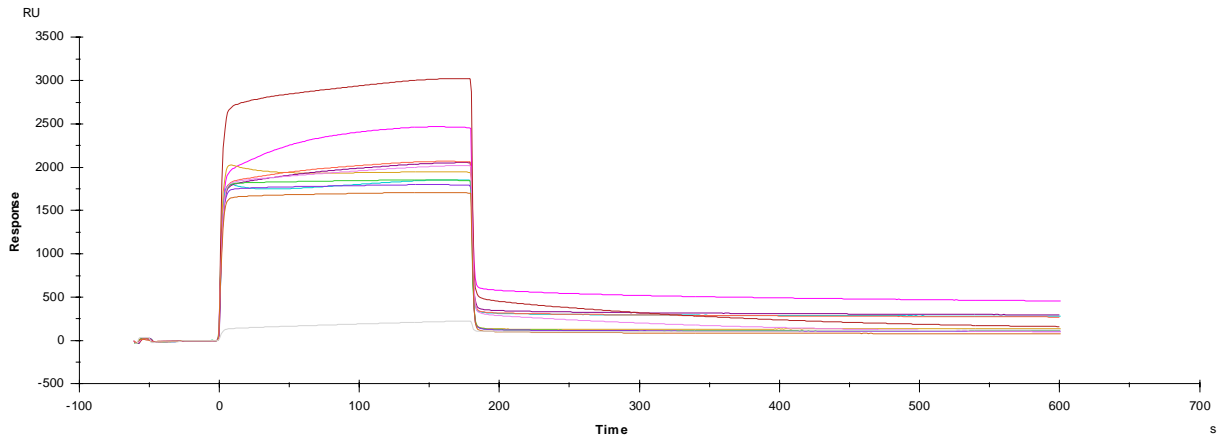


Figure 2: FC1: PR3 + inhibitor mix, inhibitor mix, control with PR3 alone.

This experiment will be done again with bigger volume for preparation of inhibitor solutions to diminish these artefacts.

22.01.2013 Inhibitors with “mater mix” at 450 uL

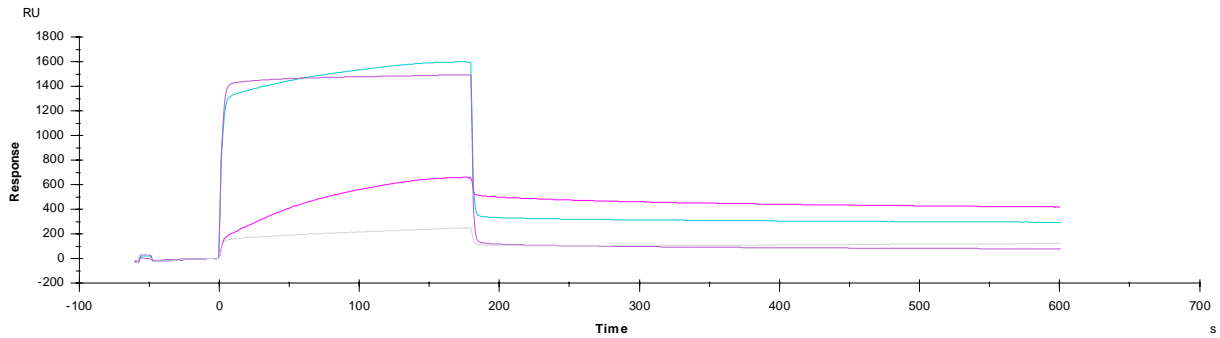


Figure 3. FC1. PR3 diluted in running buffer (pink). PR3 diluted in reconstituted buffer (blue). Control with only reconstituted buffer (purple).

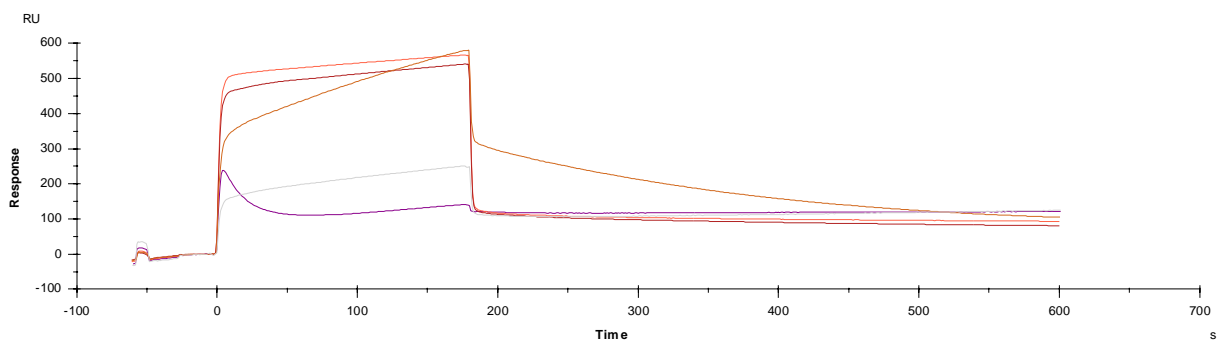


Figure 4 FC1. Inh 1+2 (purple), inh 3+4 (orange), inh 5+6 (red), inh 7+8 (“increasing” orange).

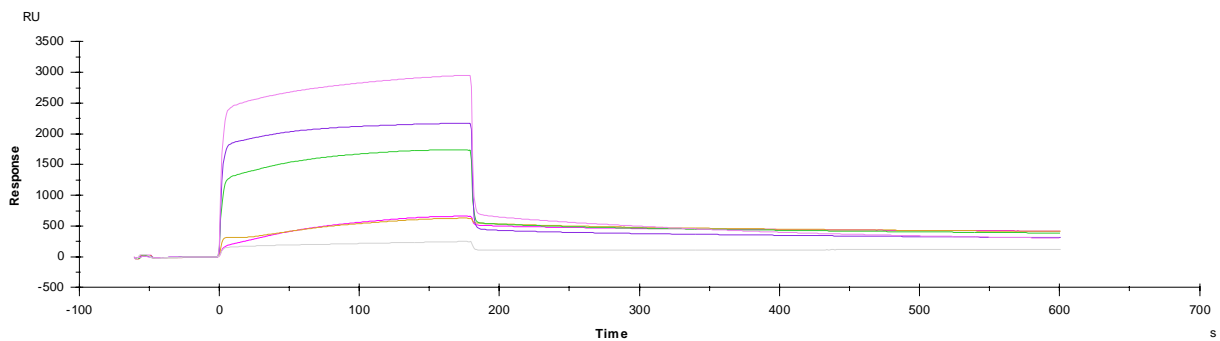


Figure 5. FC1 PR3 + inh 1,2 (yellow), PR3 + inh 4,5 (green), PR3 + inh 5,6 (purple), PR3 + inh 7,8 (light pink), PR3